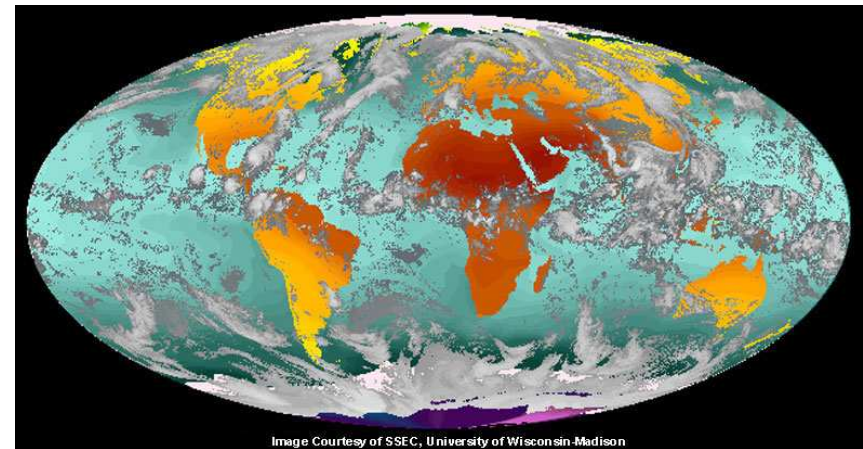




Directorate-General for Education and Culture

*The third*  
**ERASMUS MUNDUS**  
**Student Seminar**  
**Brussels 11-12 October 2007**



**How well is Erasmus Mundus Performing?**  
**Results of Students Feedback**

# ERASMUS MUNDUS

## Students Seminar 2007



Directorate-General for Education and Culture

### General data

- Online survey on student satisfaction
- 606 students replied to questionnaire (354 last year)
- Students from 49 (out of 57) courses replied
  - 10 courses with more than 20 students responding (max. 36!)
  - 15 courses with 10-20 students responding
  - 12 courses with 5-10 students responding
  - 12 courses with 1-5 students responding
- 521 third-country students + 85 EU students
- 514 EM grantees + 92 non-grantees

# ERASMUS MUNDUS

## Students Seminar 2007

Directorate-General for Education and Culture



### Section 1

## INFORMATION ON ERASMUS MUNDUS

# ERASMUS MUNDUS

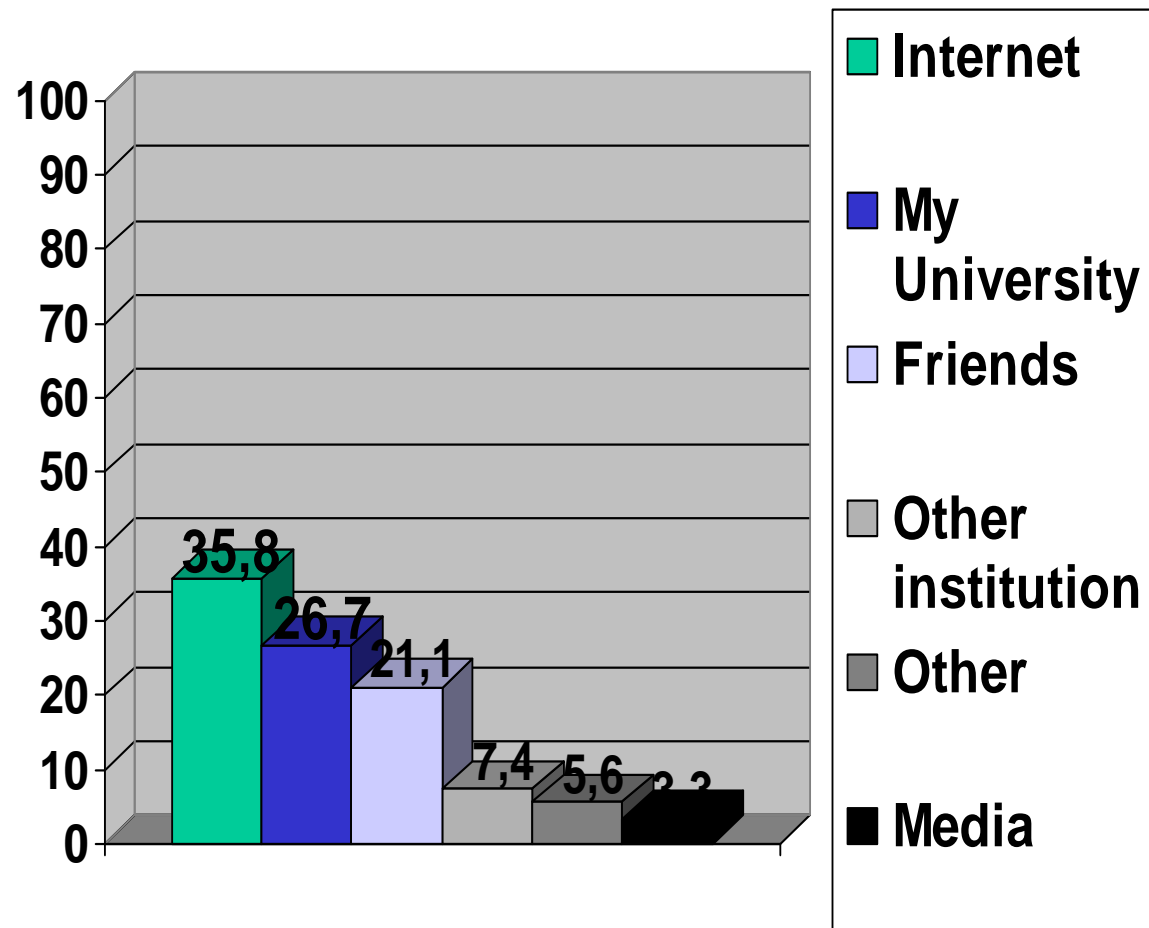
## Students Seminar 2007



Directorate-General for Education and Culture

### How did you hear about the Erasmus Mundus Programme?

- 7,5 % *My University*  
+ 4% *Internet* (+ 15%  
*previous year*)  
+ 4% *Friends* (+ 4%  
*previous year*)



# ERASMUS MUNDUS

## Students Seminar 2007

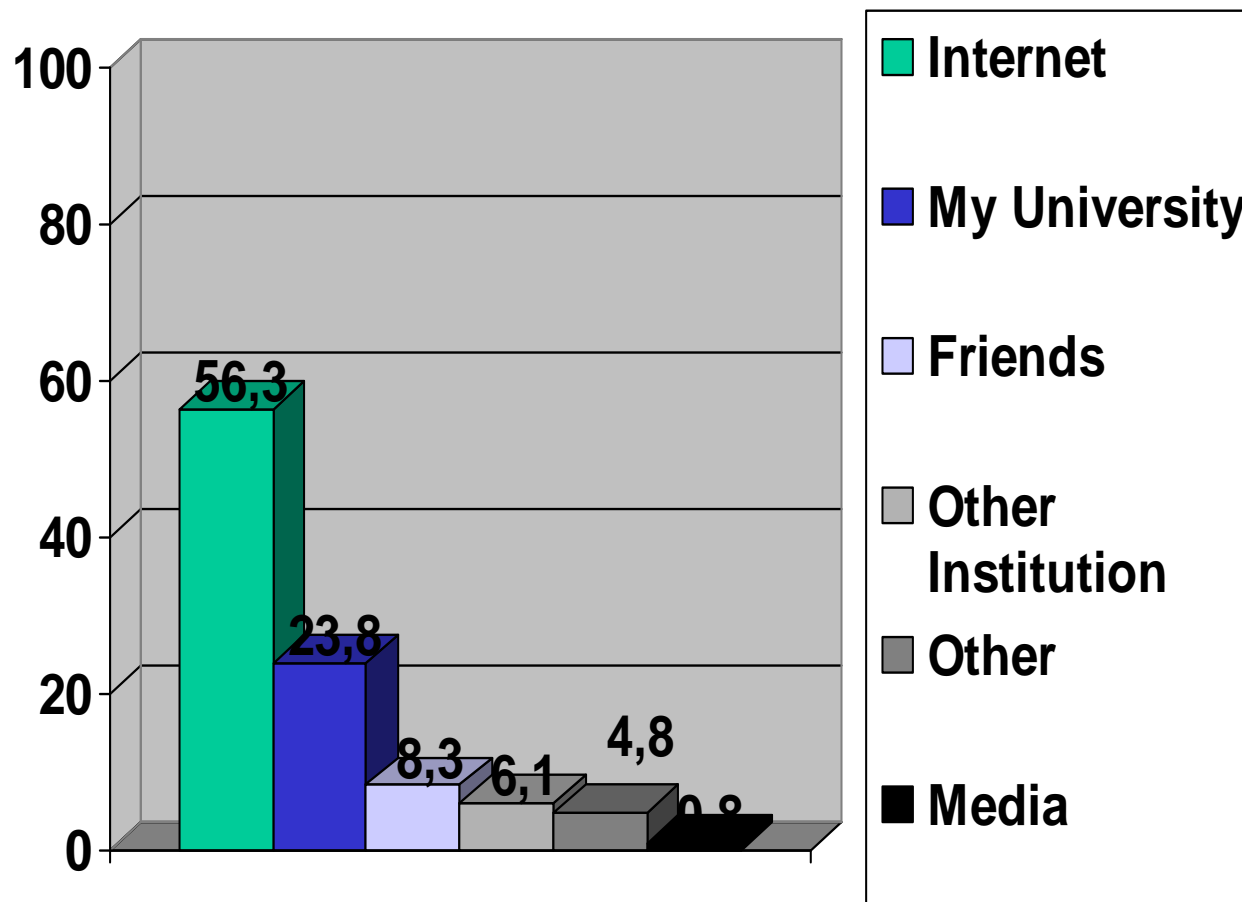


Directorate-General for Education and Culture

### How did you identify your EM Masters Course?

+ 22% *Internet* (+25%  
*previous year*)

- 10% *My University*  
(- 25% *previous year*)



# ERASMUS MUNDUS

## Students Seminar 2007



Directorate-General for Education and Culture

## Section 2

# INTEGRATION IN EUROPE

# ERASMUS MUNDUS

## Students Seminar 2007

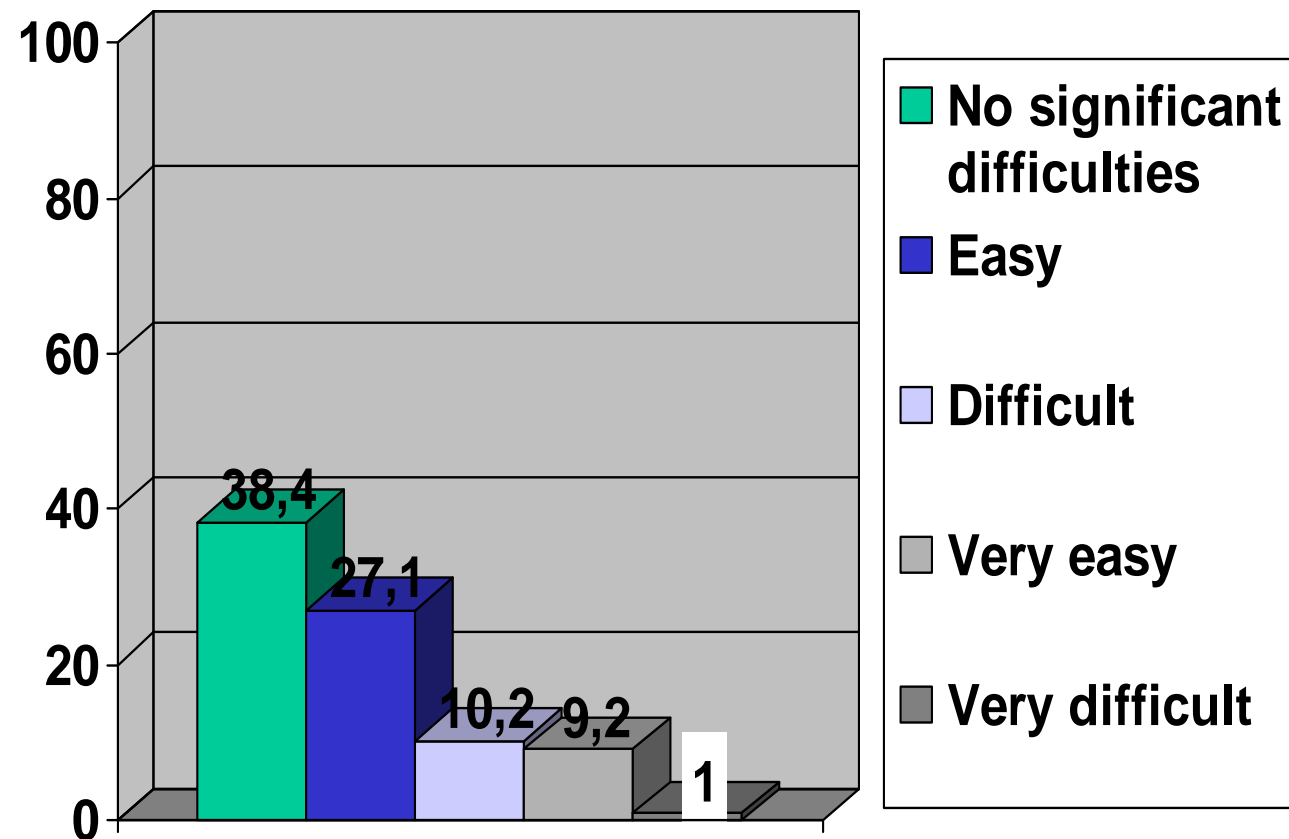


Directorate-General for Education and Culture

[For non-EU students only]

**How would you describe your progress of integration (social, cultural, etc.) in Europe?**

*No substantial changes (+or- 2%) with respect to previous year*



# ERASMUS MUNDUS

## Students Seminar 2007

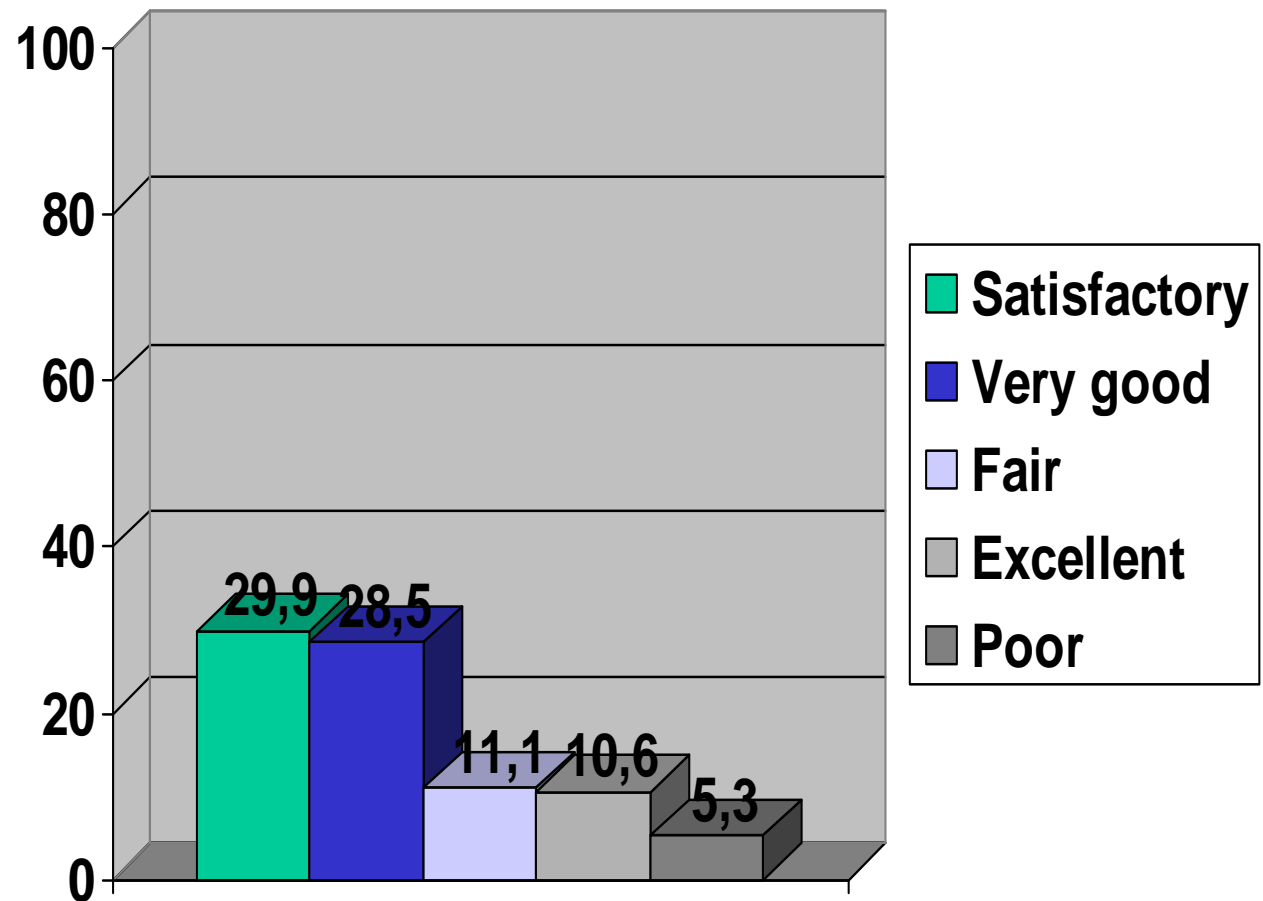


Directorate-General for Education and Culture

[For non-EU students  
only]

How good were  
university  
services in  
facilitating your  
integration?

*No substantial changes  
(+or- 2%) with respect  
to previous year*





# ERASMUS MUNDUS

## Students Seminar 2007



Directorate-General for Education and Culture

### Section 3

## ADMINISTRATION, ACCOMMODATION AND SERVICES

# ERASMUS MUNDUS

## Students Seminar 2007

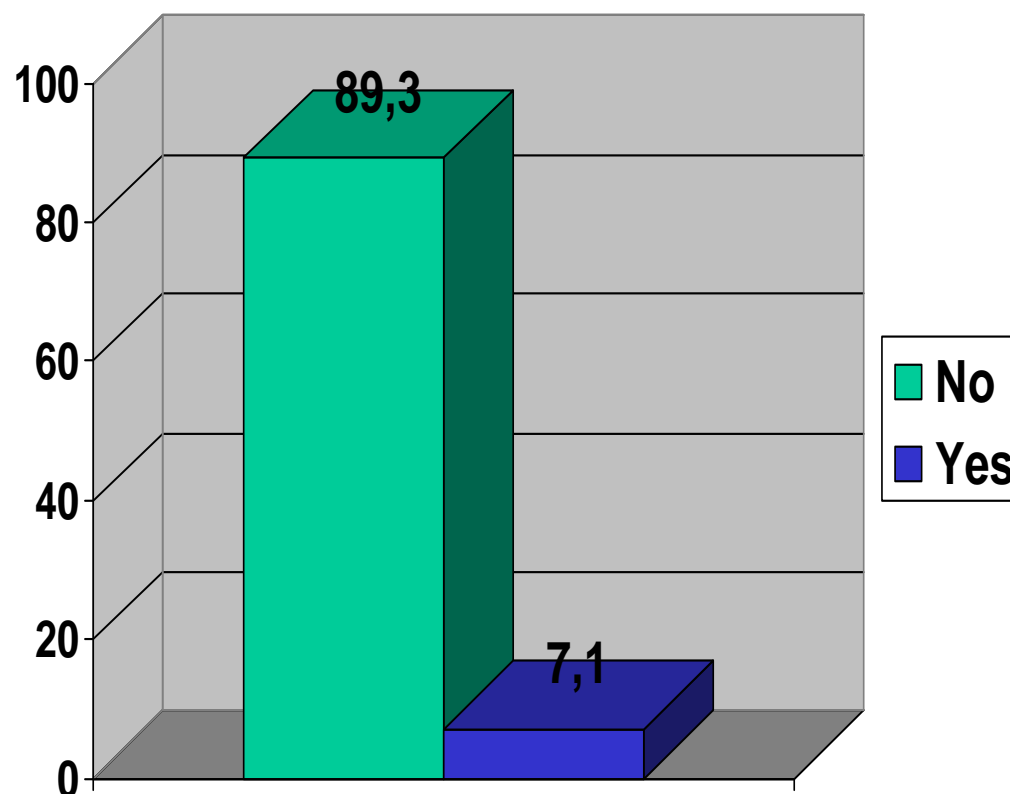
Directorate-General for Education and Culture



[For those not in  
their home country,  
both non-EU and EU  
students]

Are you  
accompanied by  
any family  
members?

*No changes*



# ERASMUS MUNDUS

## Students Seminar 2007



Directorate-General for Education and Culture

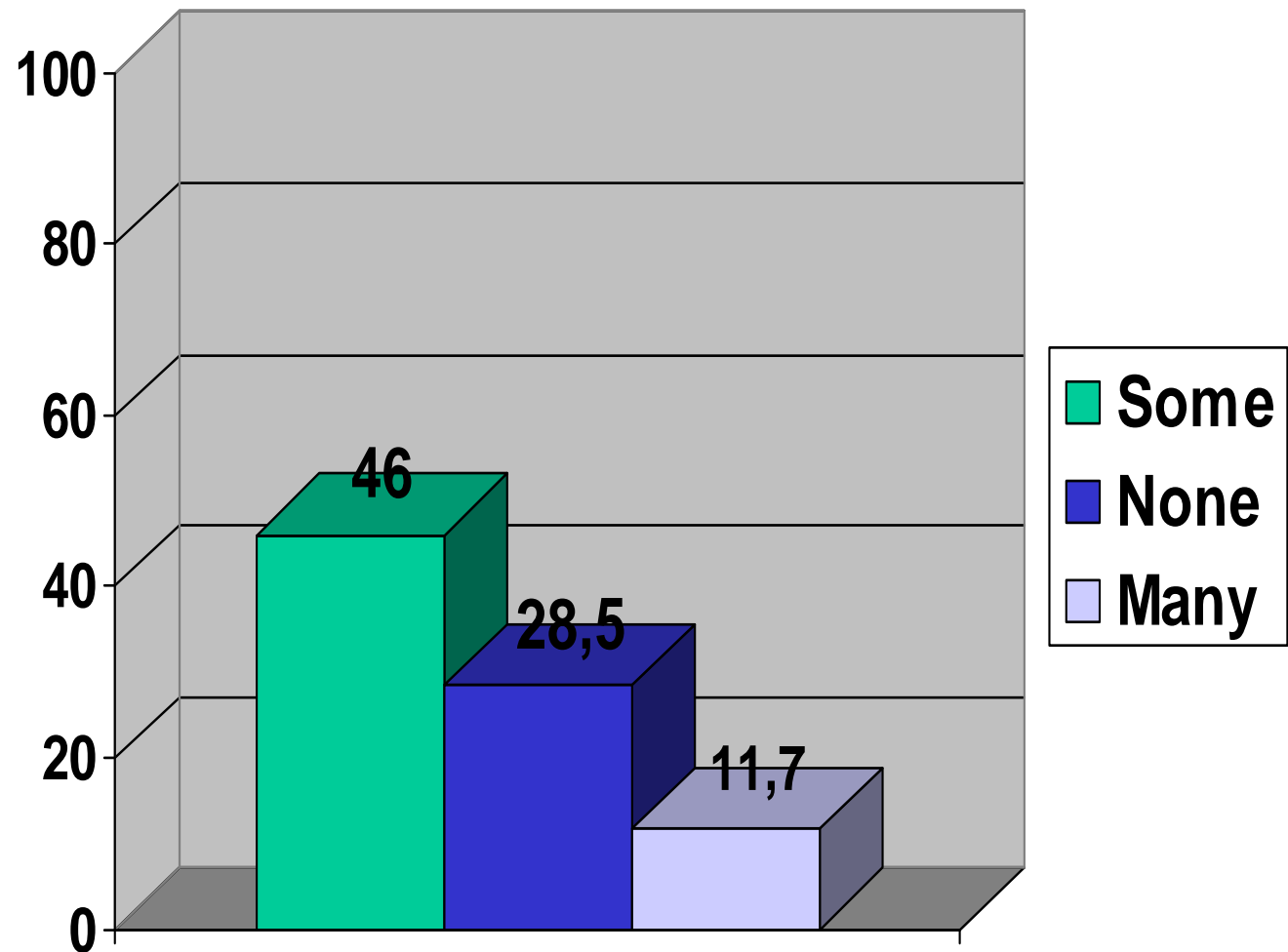
**[For non-EU students only]**

Did you encounter administrative problems while in the EU?

*"Some" + 46%*

*"Many" + 11,7%*

*"None" - 28,5% !!!*



# ERASMUS MUNDUS

## Students Seminar 2007



Directorate-General for Education and Culture

How easy was it  
to find  
accommodation?

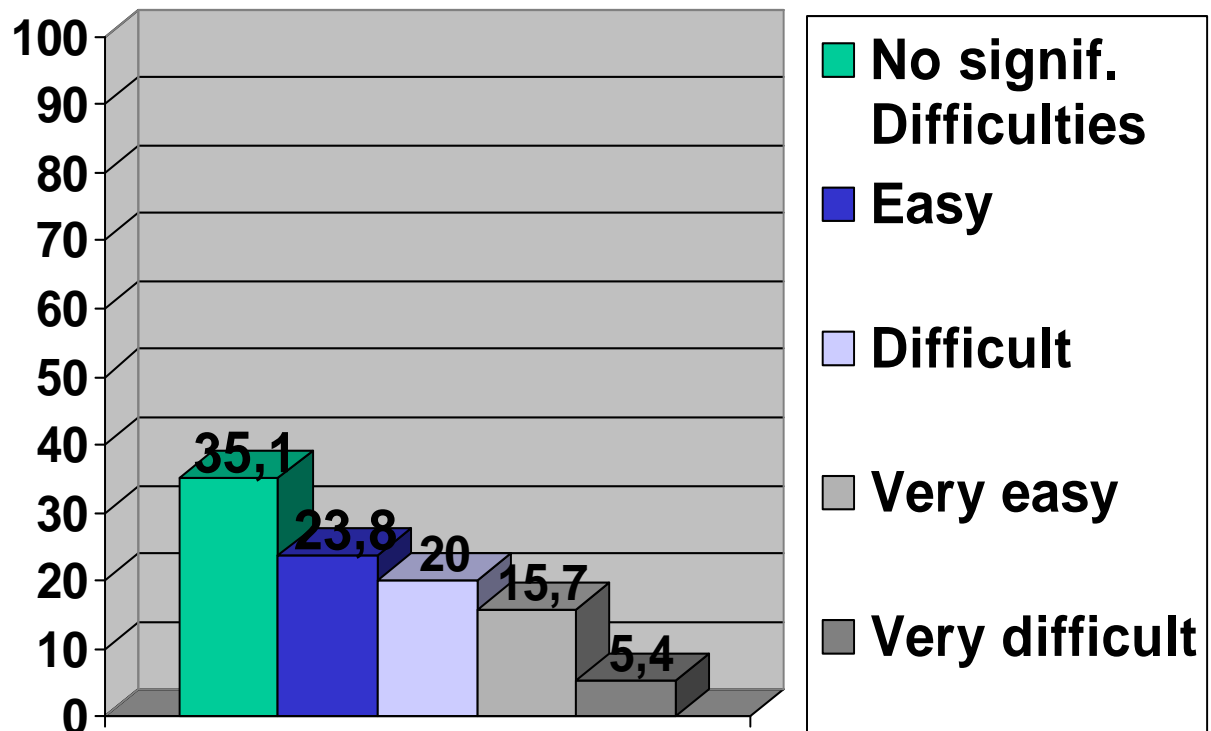
*No substantial changes,  
however:*

*Easy -3%*

*Difficult +5%*

*Very easy -2%*

*Very difficult +3%*



# ERASMUS MUNDUS

## Students Seminar 2007



Directorate-General for Education and Culture

How do you rate  
your  
accommodation?

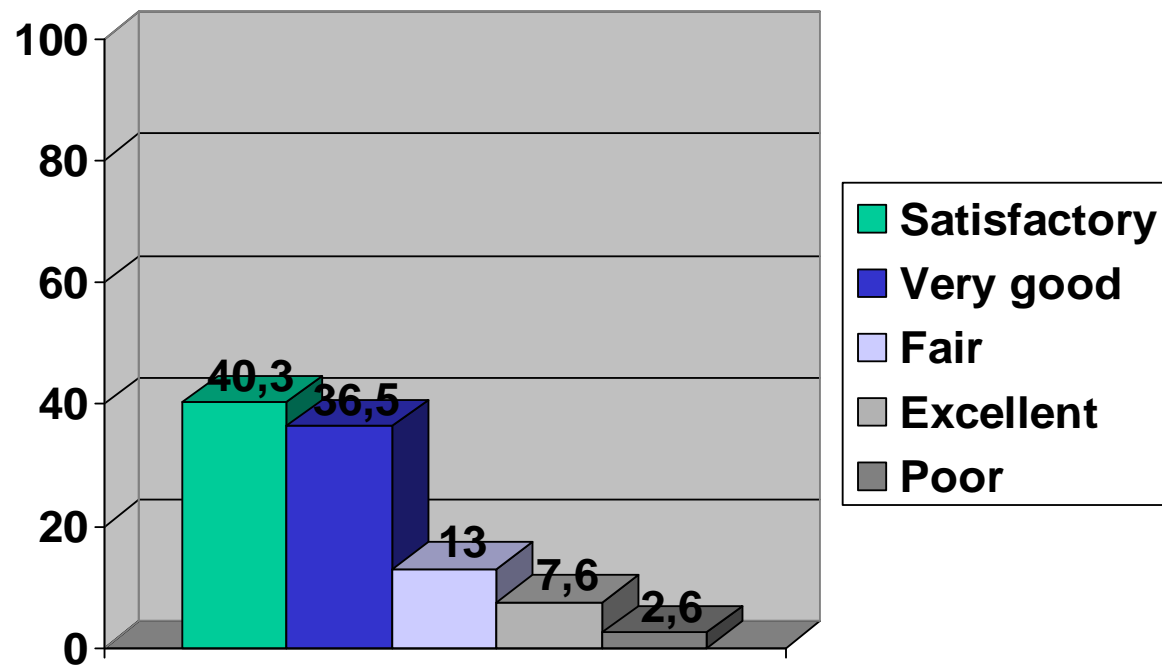
*No substantial changes,  
however:*

*Satisfactory - 5%*

*Very good +2%*

*Fair +5%*

*Excellent -2%*



# ERASMUS MUNDUS

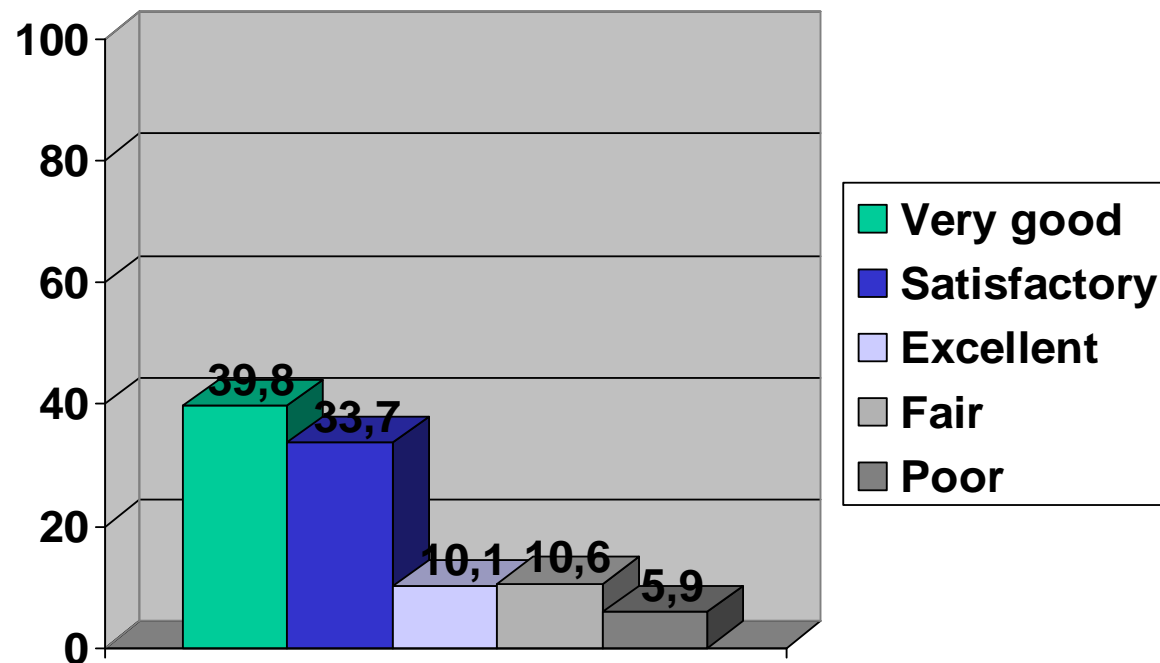
## Students Seminar 2007



Directorate-General for Education and Culture

How do you  
rate hosting and  
students  
services at your  
university?

*No substantial  
changes*



# ERASMUS MUNDUS

## Students Seminar 2007



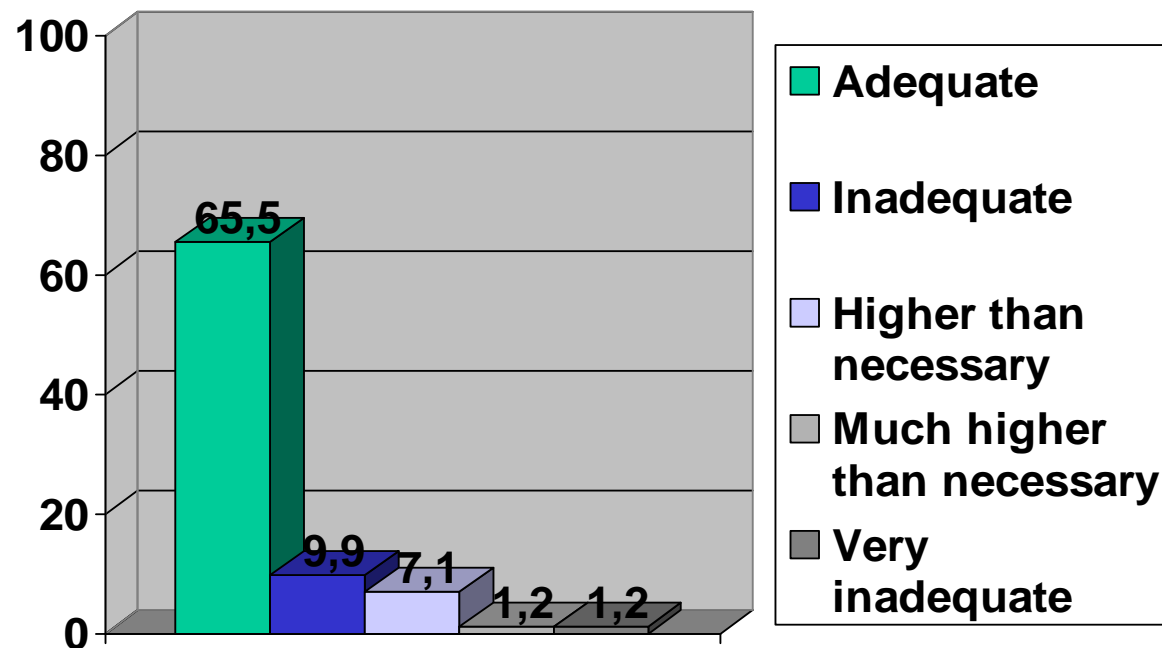
Directorate-General for Education and Culture

[For Erasmus Mundus  
grantees only]

How would you  
rate the EM  
grant amount?

*No substantial  
changes, however:*

*Inadequate + 4%*



# ERASMUS MUNDUS

## Students Seminar 2007



Directorate-General for Education and Culture

### Section 4

# STUDY PROGRAMME AND MOBILITY



# ERASMUS MUNDUS

## Students Seminar 2007

Directorate-General for Education and Culture



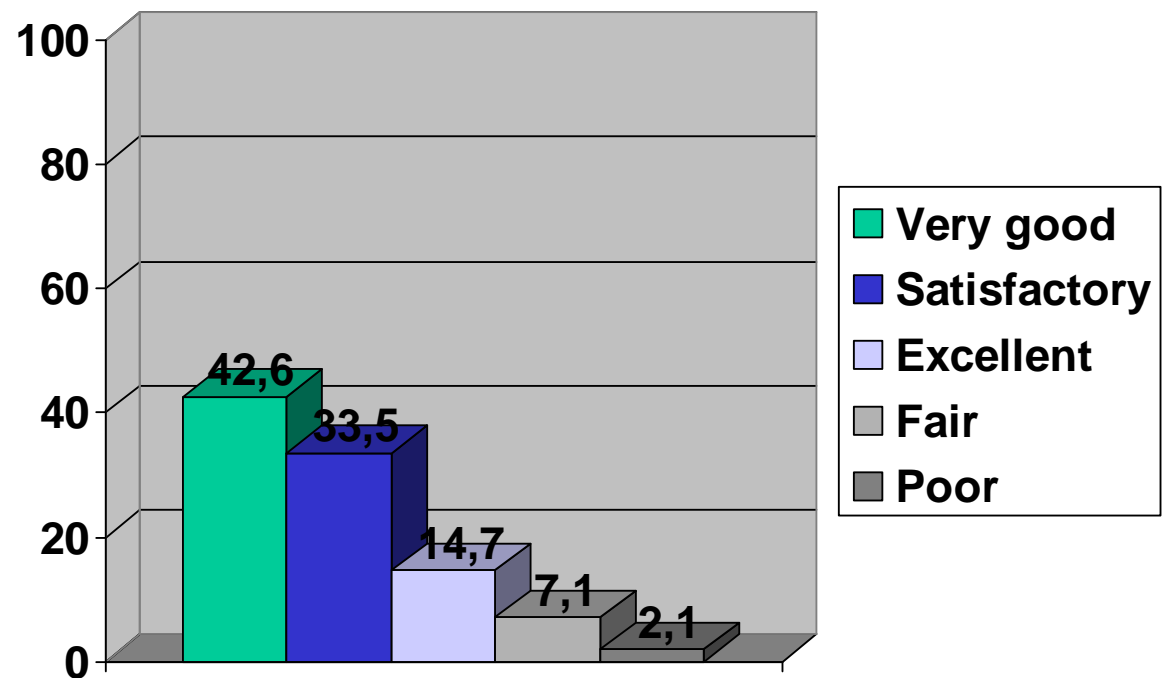
How would  
you rate your  
study  
programme?

*No substantial  
changes, however:*

*Very good -3%*

*Satisfactory +5%*

*Excellent -3%*



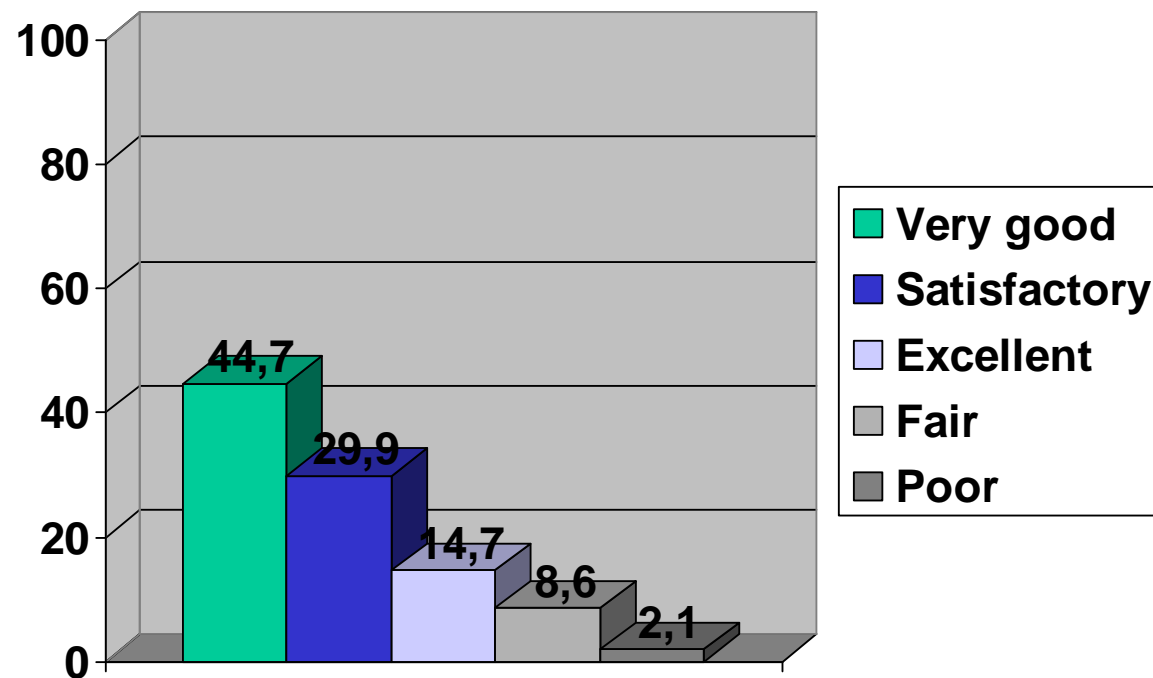
# ERASMUS MUNDUS

## Students Seminar 2007



### NEW QUESTION!

How would  
you rate the  
availability of  
your teaching  
staff?



# ERASMUS MUNDUS

## Students Seminar 2007



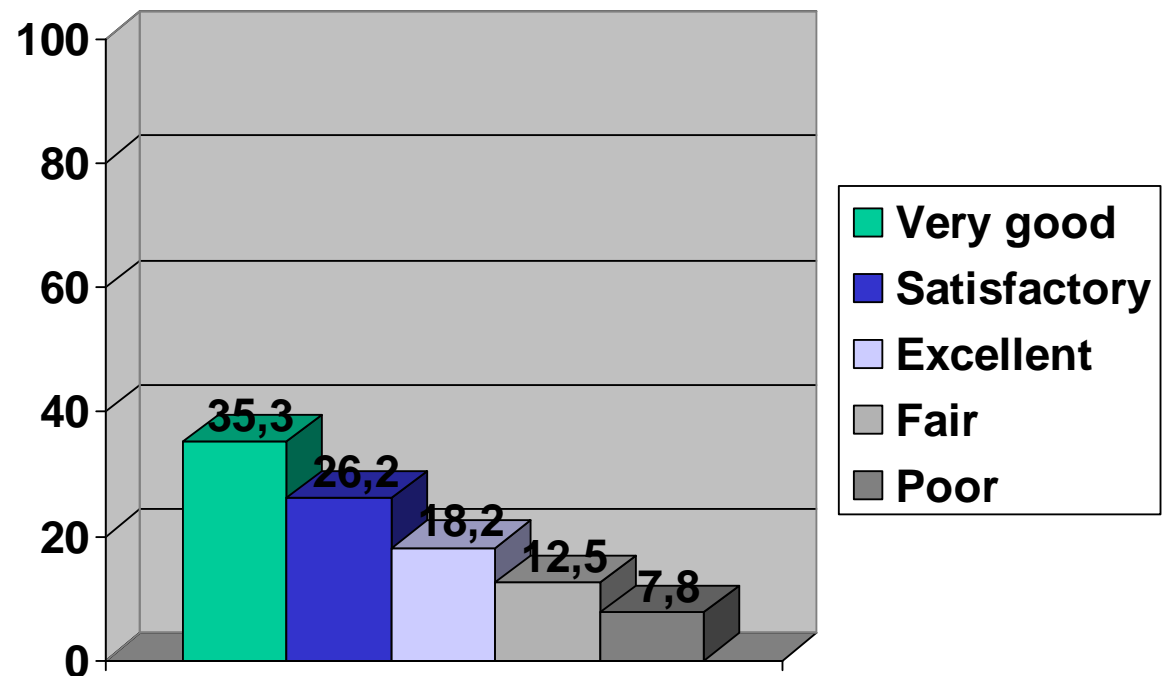
Directorate-General for Education and Culture

**How do you rate  
the organizational  
aspects of your  
intra-European  
mobility within  
your study  
programme?**

*No substantial changes,  
however:*

*Very good -3%*

*Satisfactory +4%*



# ERASMUS MUNDUS

## Students Seminar 2007

Directorate-General for Education and Culture

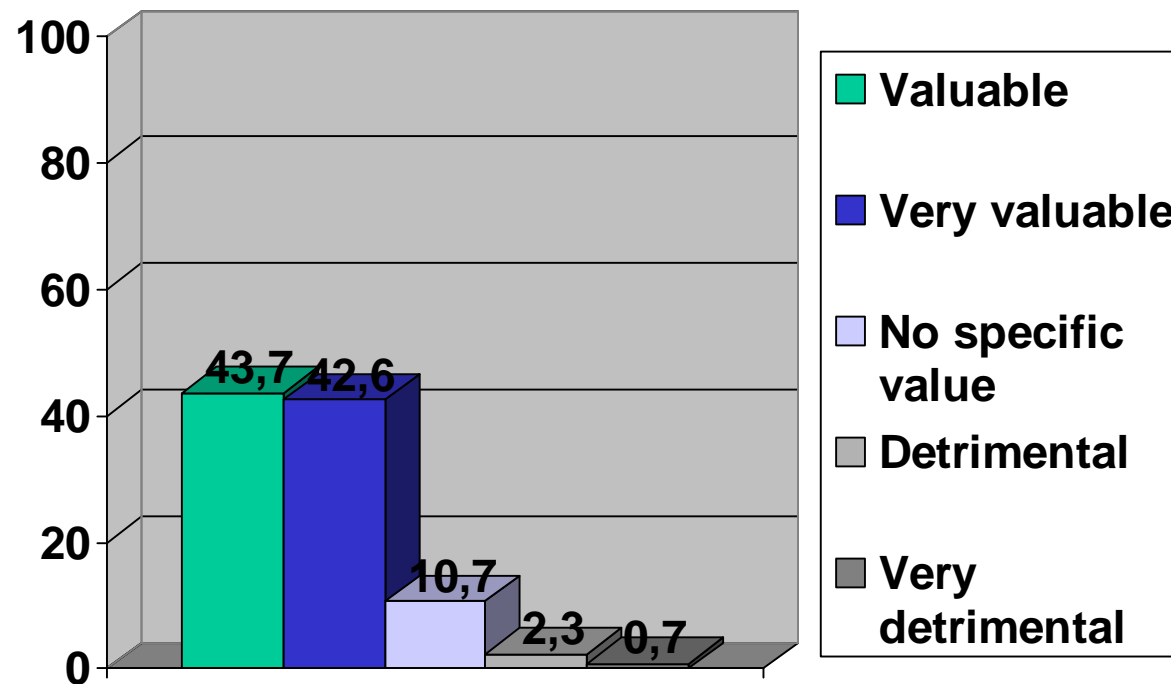


How do you  
rate the value  
of mobility in  
academic  
terms?

*Interesting:*

*Valuable -9%*

*Very valuable  
+7% !!!*



# ERASMUS MUNDUS

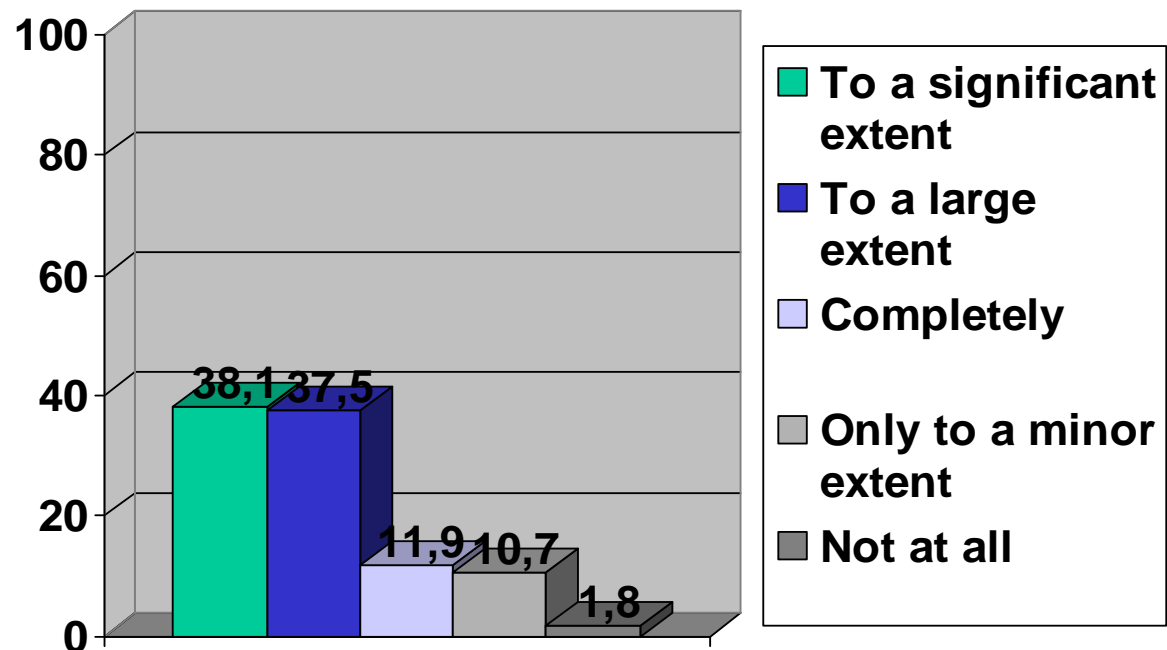
## Students Seminar 2007



Directorate-General for Education and Culture

Does your  
study  
programme  
meet your  
expectations?

*Order changed but  
with minimal  
percentage  
modifications*



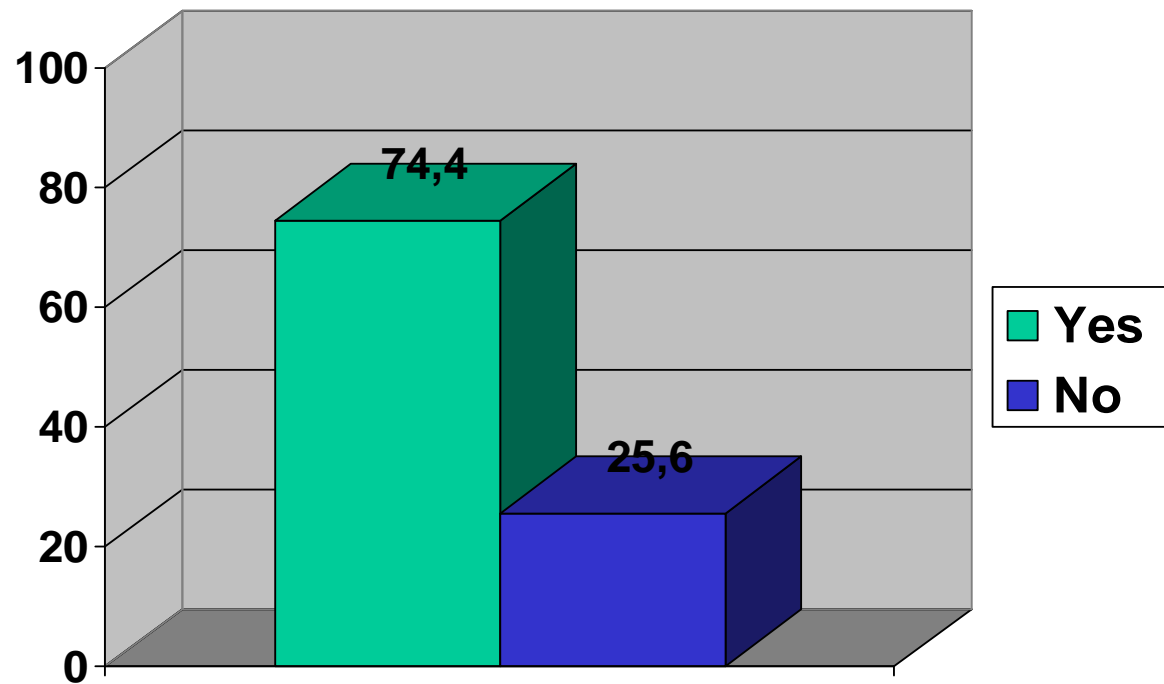
# ERASMUS MUNDUS

## Students Seminar 2007



Directorate-General for Education and Culture

Have you  
had/Will you  
have the  
opportunity to  
use two EU  
languages during  
your stay?



*Same as previous year*

# ERASMUS MUNDUS

## Students Seminar 2007



### Section 4

## FUTURE PERSPECTIVES

# ERASMUS MUNDUS

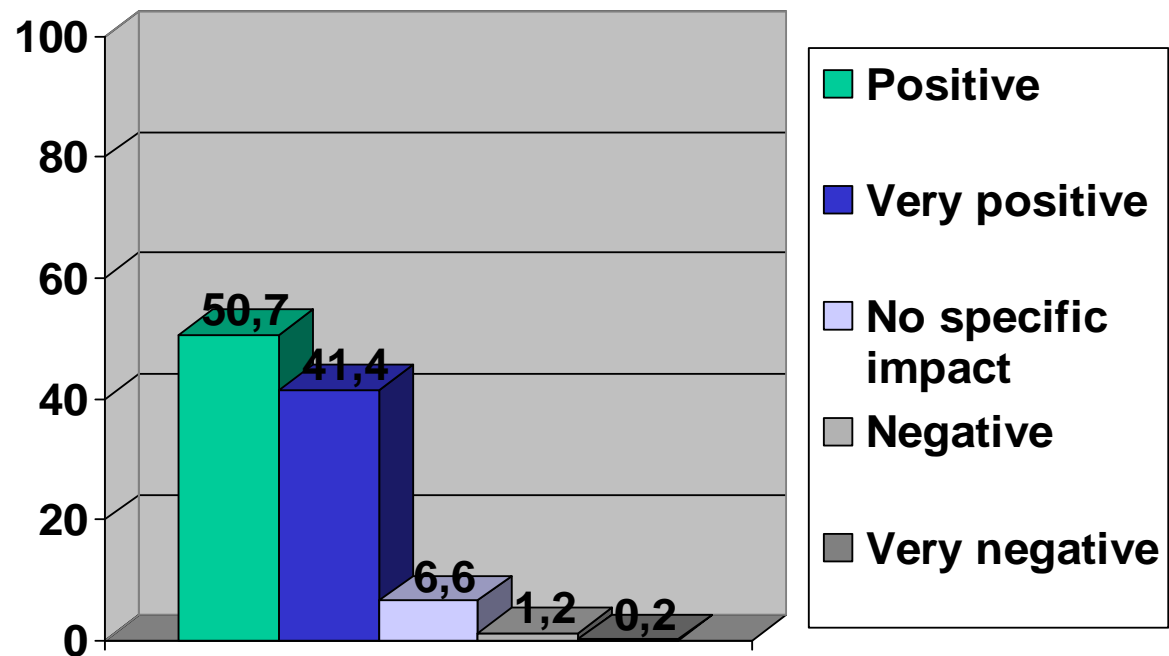
## Students Seminar 2007



Directorate-General for Education and Culture

**How would you describe the prospective impact of your study programme on your future career?**

*No substantial changes*





# ERASMUS MUNDUS

## Students Seminar 2007



Directorate-General for Education and Culture

[For non-EU  
students only]

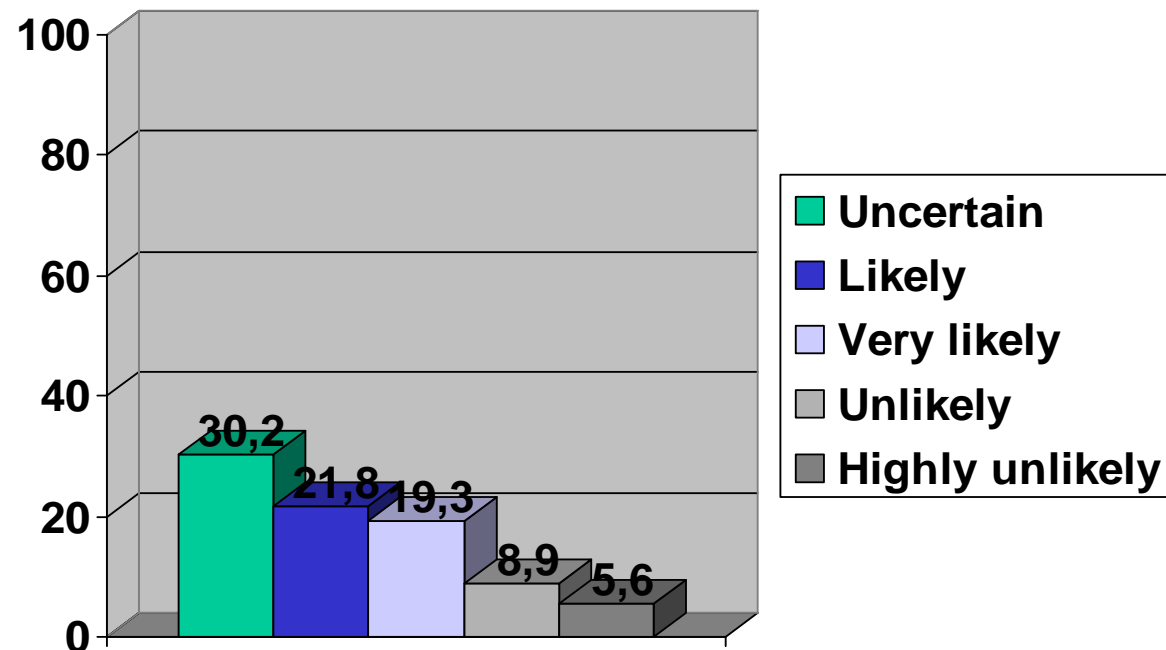
**Do you intend to  
go back to your  
country after  
your Erasmus  
Mundus Course?**

*No substantial  
changes, however:*

*Uncertain -5%*

*Very likely +2%*

*Unlikely +2,5%*



# ERASMUS MUNDUS

## Students Seminar 2007



Directorate-General for Education and Culture

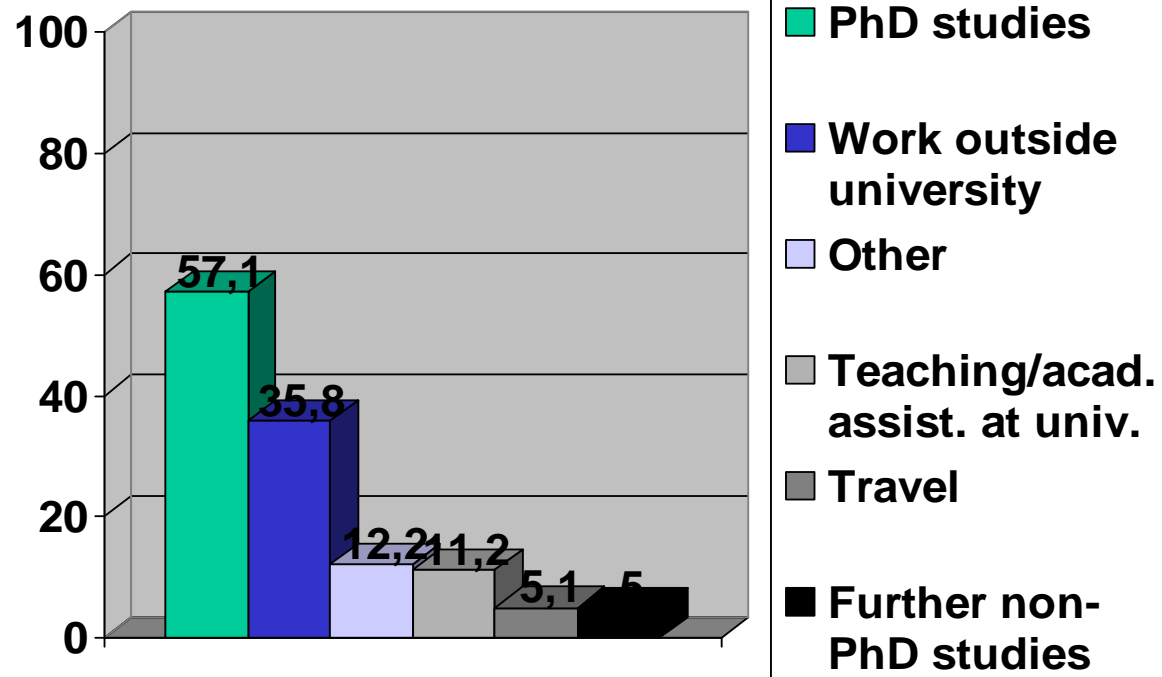
[For non-EU students only – multiple choice reply]

If you do not return home, what do you intend to do in Europe?

*PhD Studies -9%*

*Work +7%*

*!!!*



# ERASMUS MUNDUS

## Students Seminar 2007



Directorate-General for Education and Culture

### Section 5

**RECOMMEND  
ERASMUS MUNDUS?**

# ERASMUS MUNDUS

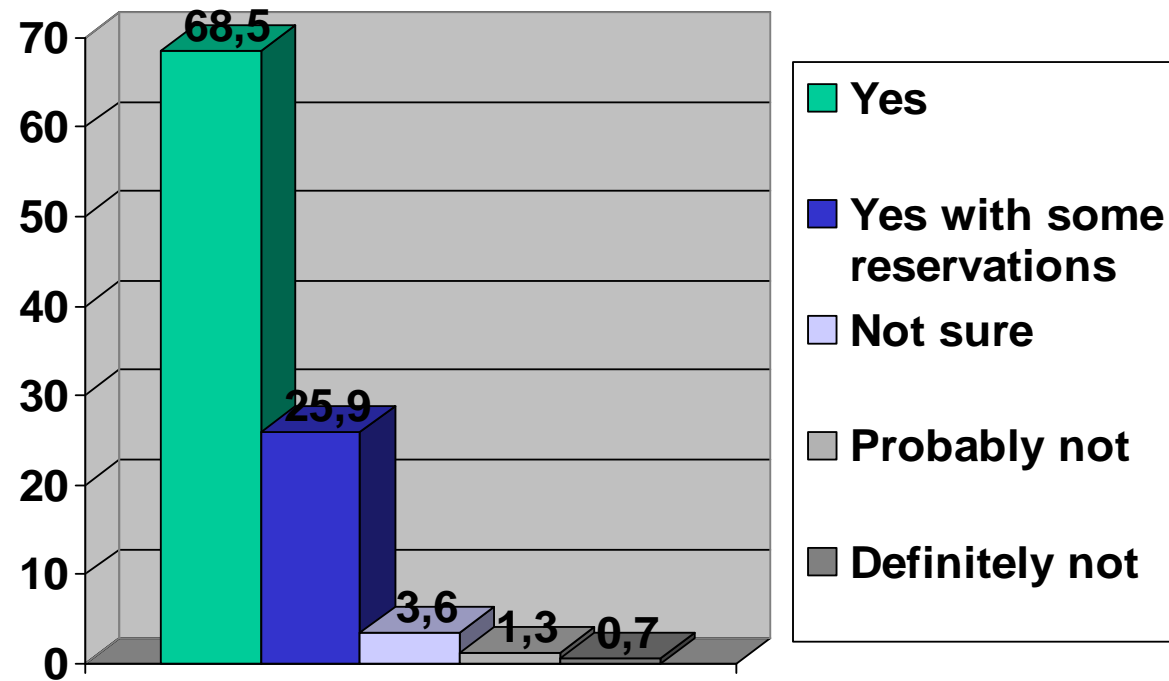
## Students Seminar 2007

Directorate-General for Education and Culture



Would you  
recommend the  
EM experience  
to your fellow  
students at  
home?

*No substantial  
changes, however:  
Yes -3%*



# ERASMUS MUNDUS

## Students Seminar 2007



Directorate-General for Education and Culture

### Conclusions (1)

- Internet « superstar » to publicise EM and specific courses; friends' « word of mouth » increasing; Home universities' role seriously declining;
- No major integration problems;
- Administrative problems seem to become more serious in spite of our efforts;
- Services and accommodation pose more problems than before but the situation is not serious;
- EM grant considered appropriate;
- Use of second language continues to be widespread;

# ERASMUS MUNDUS

## Students Seminar 2007



Directorate-General for Education and Culture

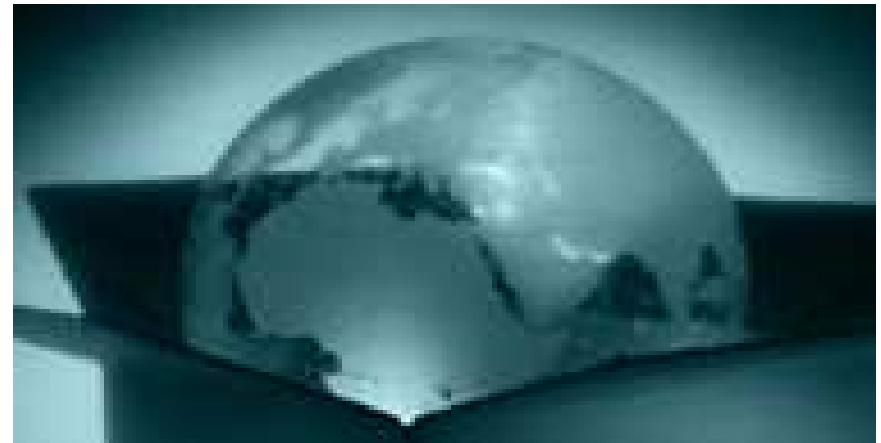
### Conclusions (2)

- Most study programmes are considered of high quality and meet expectations;
- Availability of teaching staff is very good (*new question*);
- Mobility seen more and more positively;
- (Very) positive impact on career;
- Less uncertainty about further stay in Europe;  
« work outside university » option gains popularity with respect to further PhD studies;
- EM remains a highly recommendable programme!

# ERASMUS MUNDUS

## Students Seminar 2007

Directorate-General for Education and Culture



**Thanks for your attention!**